

uPVC CABLE TRUNKING

LITAFLEX uPVC Cable Trunkings are manufactured from a specially formulated high impact Polyvinyl Chloride in strict accordance to comply with the Singapore Standard SS 275: 1999

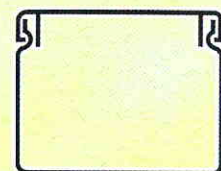
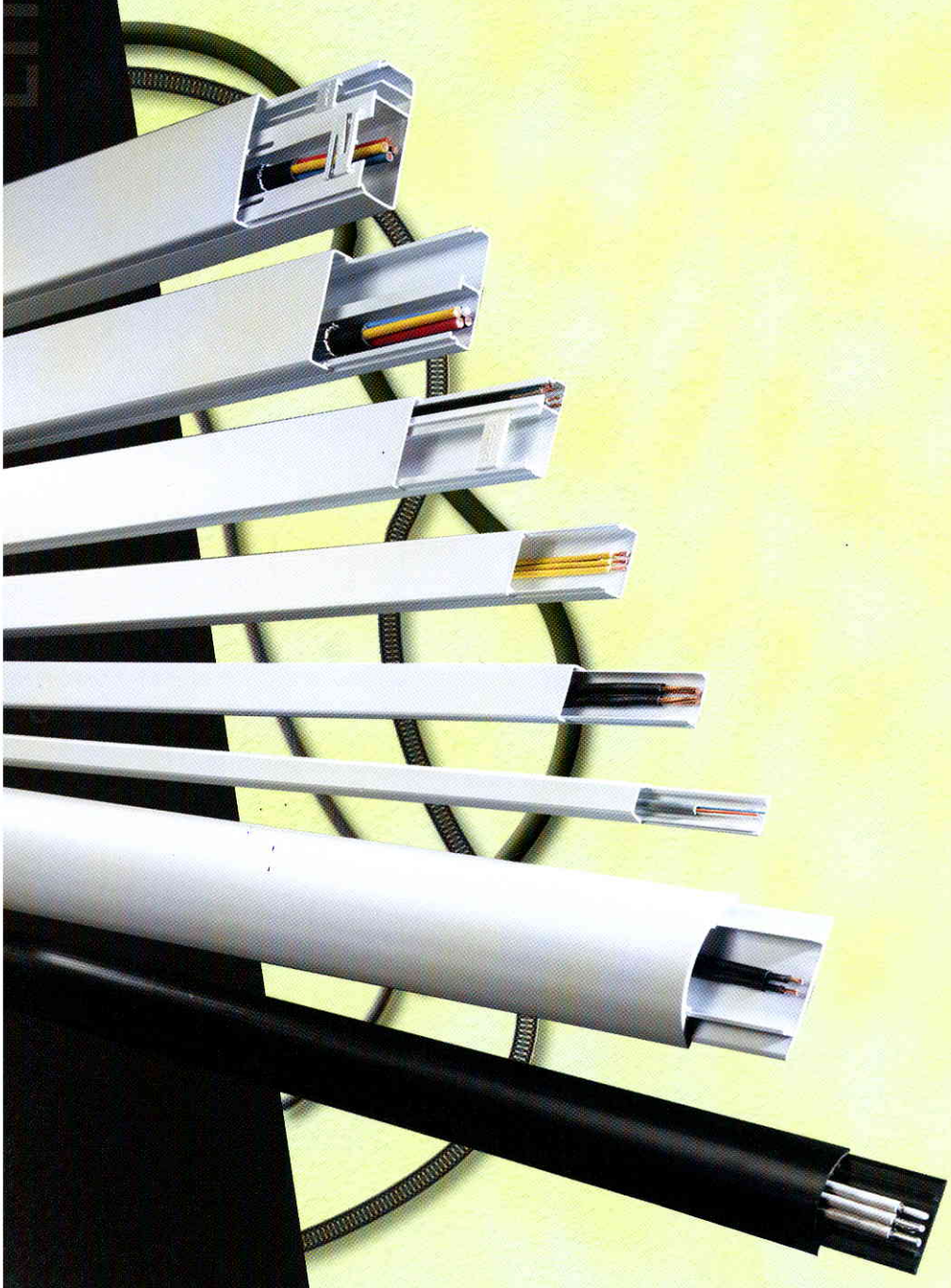
INNOVATION AND MODERNIZATION

LITAFLEX has developed this compact trunking for laying long runs of General Cable and Telecommunication Cables along the walls and across ceilings.

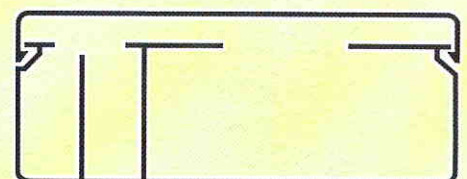
The ingenious 'Snap-on' design, together with a beautiful and compact finish, can certainly protect the Cables from being damaged or dirty. Easy installation is also facilitated.

The vast variety of design and sizes offer a wide range of application in both Domestic and Industrial Facilities.

LITAFLEX has built up an enviable reputation through the years and has faithfully delivered its promises of superior quality. This, no doubt, explains the widespread popularity of LITAFLEX products, which are specified for use in almost every contract in Private Condominiums, HDB Public Housing, Commercial and Industrial Buildings.



Single Compartment Trunking



Multi Compartment Trunking



Carpet Trunking

SINGLE - COMPARTMENT TRUNKING

Product No.	External Dimension Width X Height	Standard Pack	
		Local	Export
TK 016010	16mm X 10mm	50	100
TK 016016	16mm X 16mm	50	50
TK 022013	22mm X 13mm	50	50
TK 025013	25mm X 13mm	50	50
TK 025016	25mm X 16mm	50	50
TK 025025	25mm X 25mm	20	40
TK 032013	32mm X 13mm	50	50
TK 032016	32mm X 16mm	50	50
TK 032018	32mm X 18mm	50	50
TK 038016	38mm X 16mm	20	40
TK 038025	38mm X 25mm	20	40
TK 040013	40mm X 13mm	50	50
TK 040020	40mm X 20mm	20	40
TK 040025	40mm X 25mm	20	40
TK 040040	40mm X 40mm	10	20
TK 050032	50mm X 32mm	10	20
TK 050040	50mm X 40mm	10	20
TK 050050	50mm X 50mm	10	20
TK 075050	75mm X 50mm	10	10
TK 075060	75mm X 60mm	10	10
TK 075075	75mm X 75mm	4	10
TK 085065	85mm X 65mm	4	8
TK 105065	105mm X 65mm	4	8
TK 100050	100mm X 50mm	5	10
TK 100060	100mm X 60mm	5	10
TK 100080	100mm X 80mm	4	8
TK 125055	125mm X 55mm	5	10
TK 125100	125mm X 100mm	2	6
TK 150080	150mm X 80mm	2	6
TK 150100	150mm X 100mm	2	6
TK 200055	200mm X 55mm	2	2
TK 200100	200mm X 100mm	2	2

STANDARD LENGTH : 2M
 COLOUR : WHITE *
 LARGER SIZE : See Air - Conditioning Trunking

Single Compartment Trunking

Serves the practical and economical needs of today. Effortless and quick installation is made suited for any application that is related to the wiring and protection of cables. The base can be secured to the wall or ceiling by adhesive or nails, while the cover lid is simply snapped on to the base.

MULTI - COMPARTMENT TRUNKING

Product No.	No. Of Compartments	External Dimension Width X Height	Standard Pack	
			Local	Export
TM 040020	2	40mm X 20mm	20	40
TM 060020	2	60mm X 20mm	20	40
TM 080032	2	80mm X 32mm	10	10
TM 100040	3	100mm X 40mm	10	10

STANDARD LENGTH : 2M
 COLOUR : WHITE
 TM Series : Complete with Retaining Clips

Multi-Compartment Trunking

Specializes in the segregation of Cables, specifically to ensure safety and convenience during installation. The larger compartment is capable of carrying numerous Electrical Power Cables while the smaller compartment is suited for Telephone and CATV Cables.

A Bridging Retaining Clip is also offered to ease installation in a quicker and neater manner. These inserted clips into the pre-punched slots at the corner of the trunking base, together with the removable 'snap-on' cover lid, indeed gives a very tidy and compact installation.

CARPET TRUNKING

Product No.	External Dimension Width X Height	Standard Pack	
		Local	Export
TC 050012	50mm X 12mm	10	
TC 080018	80mm X 18mm	10	

STANDARD LENGTH : 2M
 COLOUR : WHITE / BLACK

Carpet Trunking

Specially designed to protect Cables and Cords from exposed damages while running along the surface floor. It can be secured to the floor by means of adhesive, nails or screw. The superior quality of its material and structure promotes excellent mechanical strength and also, the convenience and safety of the public. For instance, the feasibly and intelligently curved-contour design of the trunking facilitates the pushing of trolleys across the running cables on the surface floor and eliminates walking obstacles caused by running cables.

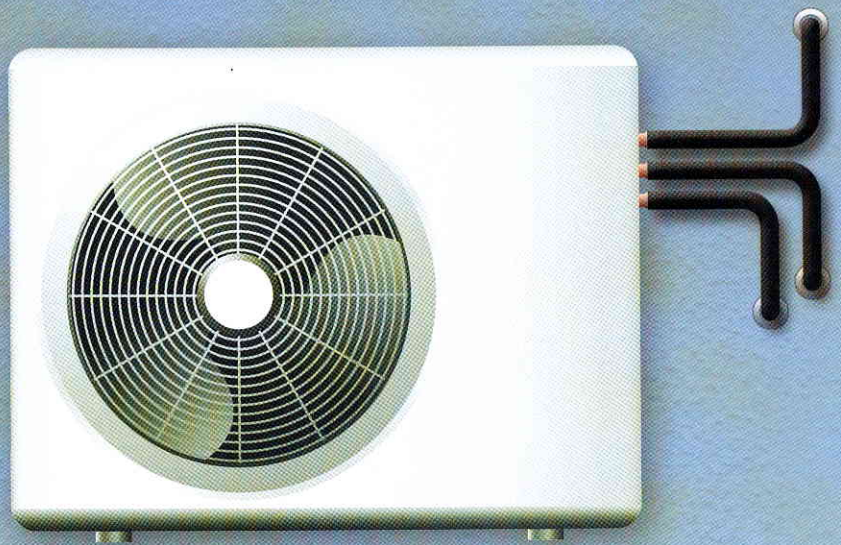
uPVC AIR - CON TRUNKING

Manufactured from an extra High Impact grade of uPVC, LITAFLEX AIR-CONDITIONING TRUNKING is Fire Resistant rated and complies with the Singapore Standard SS 275: 1999.

To facilitate distribution from the outdoor Air-Conditioning Condensing Unit to the Fan Coil Unit mounted on the wall of the living room, LITAFLEX has intelligently design this non-corrosive Trunking system to secure Electrical Cables, Insulation Tubes containing Copper Tubes and uPVC Drain Pipes.

LITAFLEX's latest NEW design on the Base and 'snap-on' lids provide a stronger grip, easy installation and also the removal for maintenance. The unique characteristics of its clean and smooth curvy edges, strength and durability allow it to be used even on rough wall surfaces and ceilings.

What is more, LITAFLEX's air-conditioning trunking is made of high weather resistant, which ensures a lasting appearance of beauty.

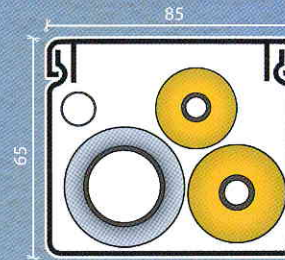


uPVC AIR - CONDITIONING TRUNKING

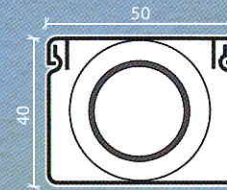
Product No.	External Width	Dimension X	Height	Standard Pack	
				Local	Export
TK 040025	40mm	X	25mm	10	20
TK 040040	40mm	X	40mm	10	20
TK 050032	50mm	X	32mm	10	20
TK 050040	50mm	X	40mm	10	20
TK 050050	50mm	X	50mm	10	20
TK 075050	75mm	X	50mm	5	10
TK 075060	75mm	X	60mm	5	10
TK 075075	75mm	X	75mm	4	10
TK 085065	85mm	X	65mm	4	8
TK 105065	105mm	X	65mm	4	8
TK 100050	100mm	X	50mm	5	10
TK 100060	100mm	X	60mm	5	10
TK 100080	100mm	X	80mm	4	8
TK 100100	100mm	X	100mm	2	6
TK 125055	125mm	X	55mm	5	10
TK 125100	125mm	X	100mm	2	6
TK 150080	150mm	X	80mm	2	6
TK 150100	150mm	X	100mm	2	6
TK 200055	200mm	X	55mm	2	2
TK 200100	200mm	X	100mm	2	2

STANDARD LENGTH : 2.44M
COLOUR : WHITE

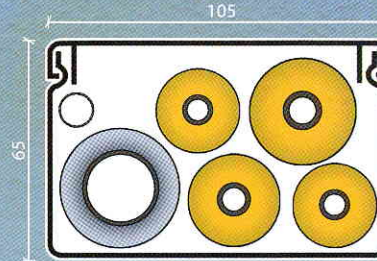
Installation Capacity of Multi Split Unit Air-Conditioning System



1 Condensing Unit to 1 Fan Coil



Insulated Drain Pipe



1 Condensing Unit to 2 Fan Coil

● Test Specifications for Cable and Air-Conditioning Trunking Made of Insulating Material

Clause	Test Required
<u>Mechanical Properties</u>	
Cable Supporting Test for surface mounting	
Temperature	60 ± 2°C
Duration	2 hr
Distortion (Max)	10%
<u>Impact Test</u>	
Precondition	60 ± 2°C
Duration	240hr
Test Temperature	15 °C
Mass of Hammer	2 kg
Height of Impact	100 mm
<u>Cover Retention Test</u>	
Mass attached to Cover	2 kg
Duration of Test	60 sec

Clause	Test Required
<u>Resistance to Heat</u>	
Testing Temperature	60 ± 2°C
Applied force of Ball Pressure	20 N
Duration of Test	1 hr
Diameter of impression	< 2 mm
<u>Resistance to Flame Propagation</u>	
Flame Test	Does not ignite or flames. Self extinguished within 30s after removal of flame.
<u>Insulating Characteristics</u>	
Electric Insulating Strength Test	
Applied Voltage	2500 V
Duration of Electrification	1 min
<u>Insulation Resistance test</u>	
Applied Voltage	500 V dc
Duration of Electrification	1 min